

# 1140LA POWER AMPLIFIER

## 1000 Watts RF Power For:

- Industrial
- Medical
- Lab Use



## Featuring:

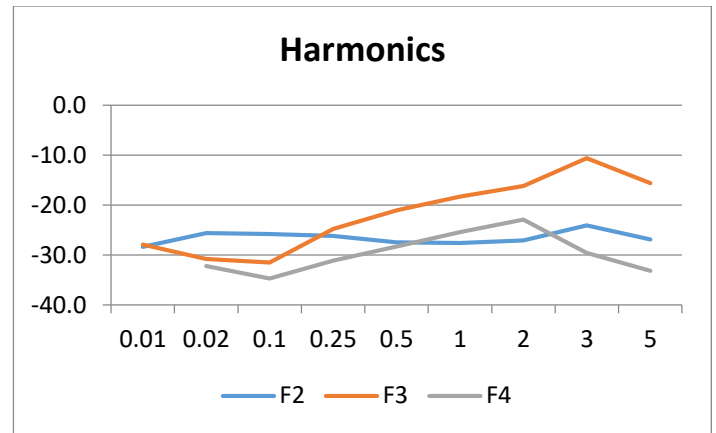
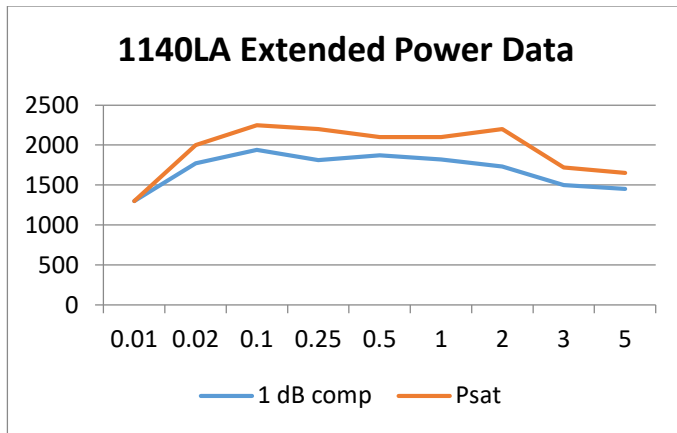
- 10 KHz – 2 MHz
- Power Measurement
  - Forward & Reflected
- Instantaneous Bandwidth
- Solid State Reliability
- Forced Air Cooling

### E&I 1140LA Specifications

<b>Class of Operation:</b>	Class AB
<b>Frequency Coverage:</b>	10 KHz – 2 MHz
<b>Rated Power:</b>	1,000 Watts
<b>Saturated Power:</b>	1,500 Watts
<b>Power Gain:</b>	55 dB nominal
<b>Gain Flatness:</b>	+/- 1 dB
<b>Input Power for Rated Pout:</b>	5 mW or 0.7 dBm
<b>Input Impedance / VSWR:</b>	50 Ω / VSWR 1.5:1 Max
<b>Output Impedance / VSWR:</b>	50 Ω / VSWR 2:1 Max
<b>Ruggedness:</b>	∞:1 VSWR
<b>Stability:</b>	Unconditional into any passive or reactive load
<b>Protection:</b>	Unit will withstand input signal of +13 dBm without damage (1.0 V rms) max.
<b>AC Input:</b>	100 – 240 VAC 208 VAC 13 Amps Max 120 VAC 25 Amps Max
<b>Temperature Range:</b>	0° – 45° C
<b>Cooling:</b>	Forced Air
<b>Dimensions (H x W x D):</b>	13.12 x 16.71 x 20.1 inches 333.2 x 424.4 x 510.1 mm
<b>Weight:</b>	108 lbs (49 kg)
<b>Connectors:</b>	N
<b>Rack Mounting:</b>	Yes
<b>RF Input Signal:</b>	AM, FM, SSB, Pulsed



# 1140LA POWER AMPLIFIER



**Protection:**

- Software Overdrive Limit: 1,575 Watts
- Software Reverse Power Limit: 1,000 Watts

**Performance into 50 ohms**

Input				Amplifier Gain Nominal dB	Output			
Input Power Watts	dBm	V p-p Volts	V rms Volts		Output Power dBm	Watts	V p-p Volts	V rms Volts
0.000316	-5.00	0.36	0.13	55	50.00	100.00	200.00	70.71
0.0013	1.02	0.71	0.25	55	56.02	400.00	400.00	141.42
0.0032	5.03	1.13	0.40	55	60.03	1008.06	635.00	224.51
0.0044	6.48	1.33	0.47	55	61.48	1406.25	750.00	265.17



Electronics & Innovation, Ltd.  
 150 Research Blvd.  
 Rochester, NY 14623  
 Tel: 585-214-0598 / Fax: 585-214-0580  
 www.eandiltd.com